



**LOCATION:**

26 Manitoba Street  
Downtown Bracebridge  
P1L 1R9

**Contact:**

Cassandra  
705-952-1153

**DETAILS:**

- 825 square feet on three levels
- Front part of store is accessible
- Small washroom and storage area in back
- Rear entrance for stock deliveries



**LOCATION:**

27 Manitoba Street  
Downtown Bracebridge  
P1L 1S4

**CONTACT:**

Lori-Lynn Giaschi-Pacini  
705-646-8122

**DETAILS:**

- Approximately 4000 sq ft
  - Great space for restaurant
  - Features roll up front windows
- Eligible for Signage Grant from the Town of Bracebridge



**LOCATION:**

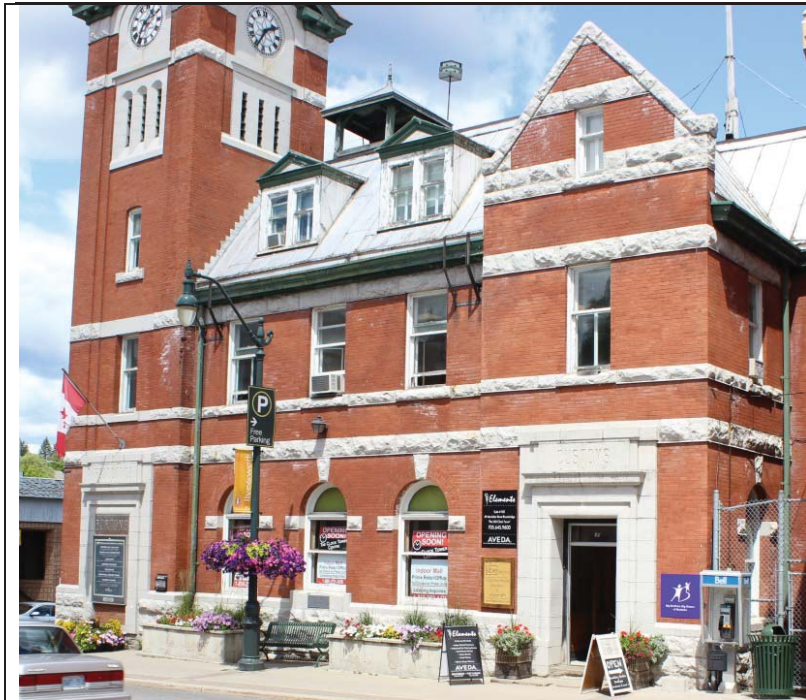
36 Manitoba Street  
Downtown Bracebridge  
P1L 1R9

**CONTACT:**

David Rodie  
647-567-7187

**DETAILS:**

- Approximately 900 sq ft
- New owner will renovate to suit tenant
- Eligible for Signage Grant from the Town of Bracebridge



**LOCATION:**

49 Manitoba Street  
Uptown Bracebridge  
P1L 2E2

**LANDLORD:**

Martin Sheffield  
1-800-252-1476

**DETAILS:**

- Various retail spaces available on all levels within this iconic downtown building
- Rents range from \$325-\$500 per month and include all utilities



**LOCATION:**

111 Manitoba Street  
Midtown Bracebridge  
P1L 2B6

**LANDLORD:**

Lori-Lynn Giaschi-Pacini  
705-646-8122

**DETAILS:**

- 1500 sq ft across from Memorial Park
- 6 private parking spaces in rear of building
- Available April 2018
- Eligible for Signage Grant from the Town of Bracebridge



**LOCATION:**

200 Manitoba Street  
Uptown Bracebridge  
P1L 2E2

**LANDLORD:**

TAG Enterprises Inc.  
Jane or Zoe Theodoropolous  
705-645-0056

**DETAILS:**

- 3 vacant units
- Approximately 1000 square feet each
- Private parking lot in front
- Eligible for Signage Grant from the Town of Bracebridge



**LOCATION:**

233 Manitoba Street  
Uptown Bracebridge  
P1L 1S3

**LEASING:**

Ken Banks  
705-645-6589

**DETAILS:**

- Approximately 8000 square feet
- Landlord willing to divide space in half
- Front and rear entrance
- Private parking lot in rear of building
- Eligible for Signage Grant from the Town of Bracebridge



**LOCATION:**

8A Taylor Road  
Downtown Bracebridge  
P1L 1S3

**LEASING:**

Martin Sheffield  
[inquiries@theclocktowercentre.com](mailto:inquiries@theclocktowercentre.com)

**DETAILS:**

- Approximately 700 square feet
- Divided into 4 rooms
- Small kitchen and washroom
- 2 Private parking spaces
- Eligible for Signage Grant from the Town of Bracebridge





**LOCATION:**

11B Taylor Road  
Downtown Bracebridge  
P1L 1S6

**LEASING:**

Kim Gronfors  
705-645-0248

**DETAILS:**

- Two commercial spaces available
- Approximately 1,450 sq' divided into two level
- Contemporary space with heritage elements has been completely renovated giving it a unique and memorable vibe
- Vestibule area flooded with natural light, highlights the slate flooring and historical brick walls and the built-in reception desk
- Three steps lead to the upper carpeted level, with 6 semi-private offices, copier and supply/storage area.
- One-of-a-kind staircase leads to the lower level with slate floors throughout, a fully enclosed large boardroom, open concept working area, two bathrooms, a kitchenette with dishwasher and fridge and a large, lockable storage area.
- Eligible for Signage Grant from the Town of Bracebridge